

Walter and Binder
Cutting Wheat

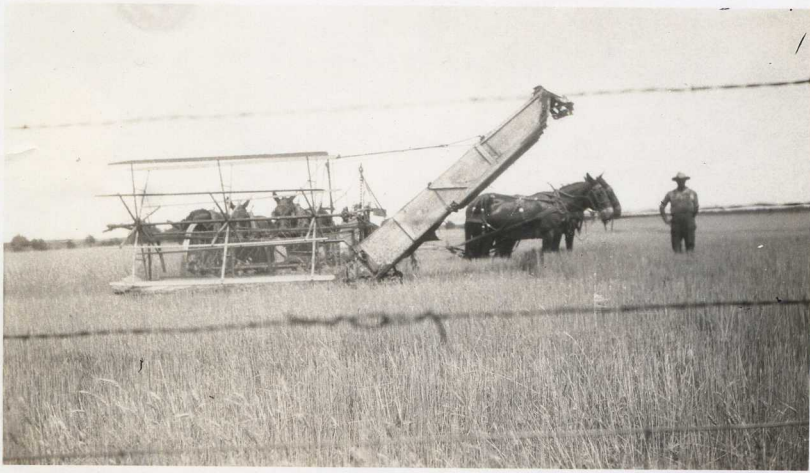


Irene's handwriting

I really dont
know what year
but it was while
he was harvesting
wheat with a header
It was taken + put
in a wheat stack
and thrashed later
on, No Combines
in Walters
day—



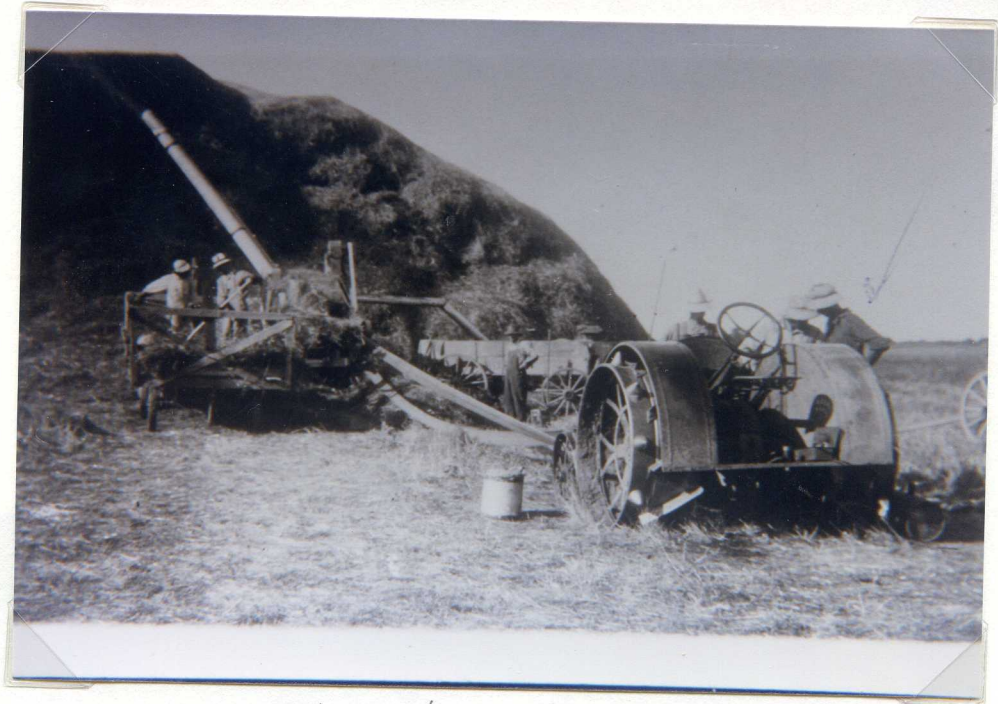
Binding Wheat



Walter C Hebbe

Header
Cuts wheat stalks
then wheat is
thrashed - head
removed from stalk.
The stalk is used
for cattle feed; the
head is taken to mill
to grind into flour

In the days of William Christopher and Walter Hebbe one walked behind mules pulling the plows, combines or whatever implement the farmer was using. Corn and cotton had to be planted in rows so the farmer had to use a planter which dropped the seeds in neat rows. Another way of planting was by broadcasting or taking a handful of seed and tossing it outward. The plants would grow at random where the seeds fell. One planted alfalfa by strapping a device to one's shoulder and turning a handle which released the alfalfa seeds as one walked through the fields. In 1908 wheat was not a crop that was planted in the Dover area. It was mostly corn, cotton and alfalfa then.



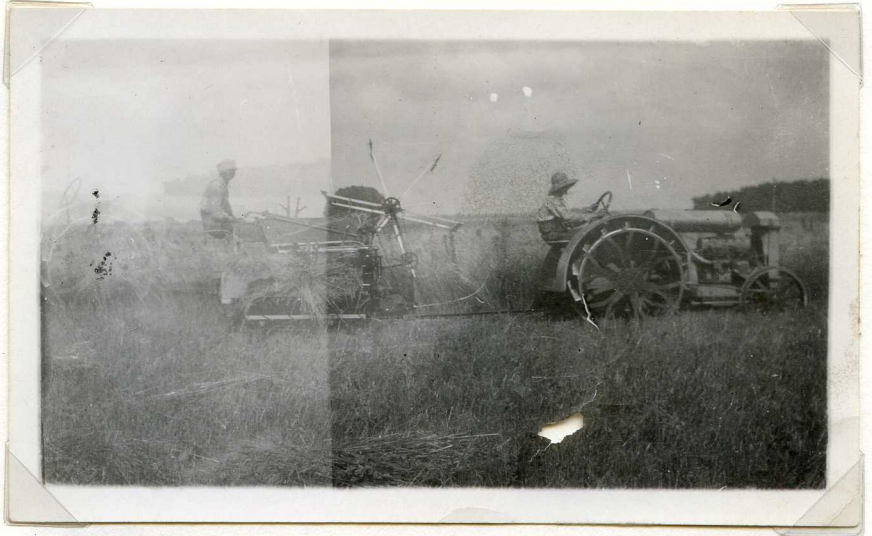
Thrasher

1926

Walter Hebbe

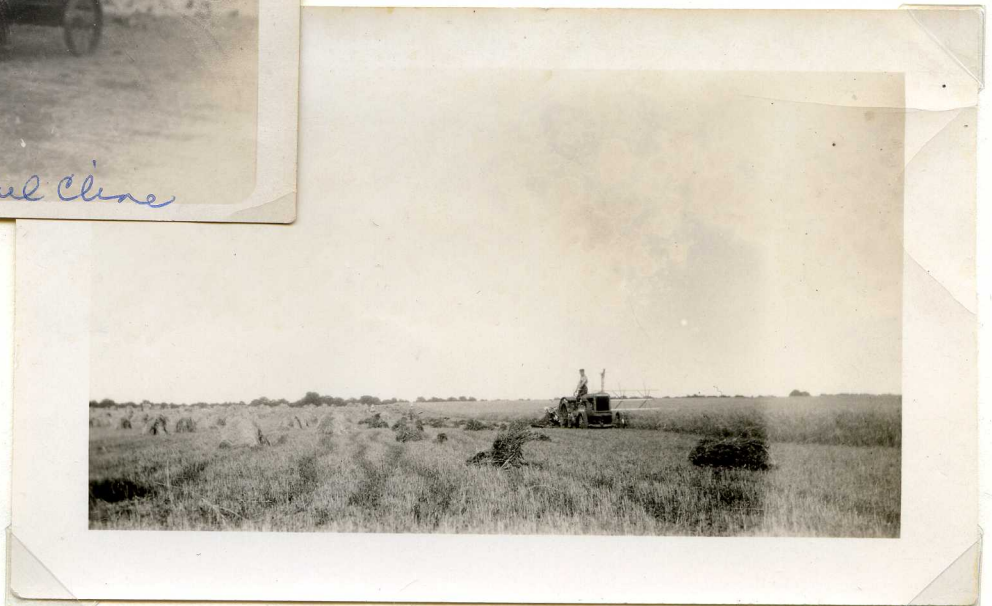


Walter C Hebbe



Walter Hebbe - Herschel Cline

Granary 1915





Chicken house built
by Walter Hebbe from
plans from O.S.U.
Everyone in area
had one like it.



Back view of Walter
and Fern's home near Do



2171 1912